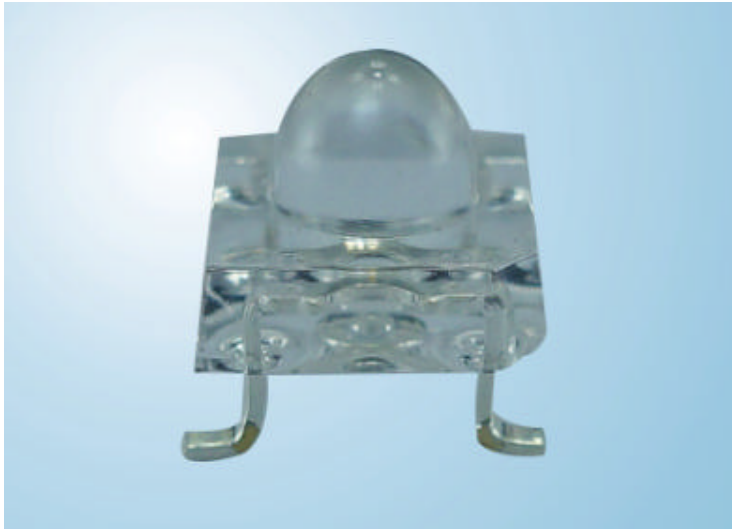




High-power Infrared LED



Features

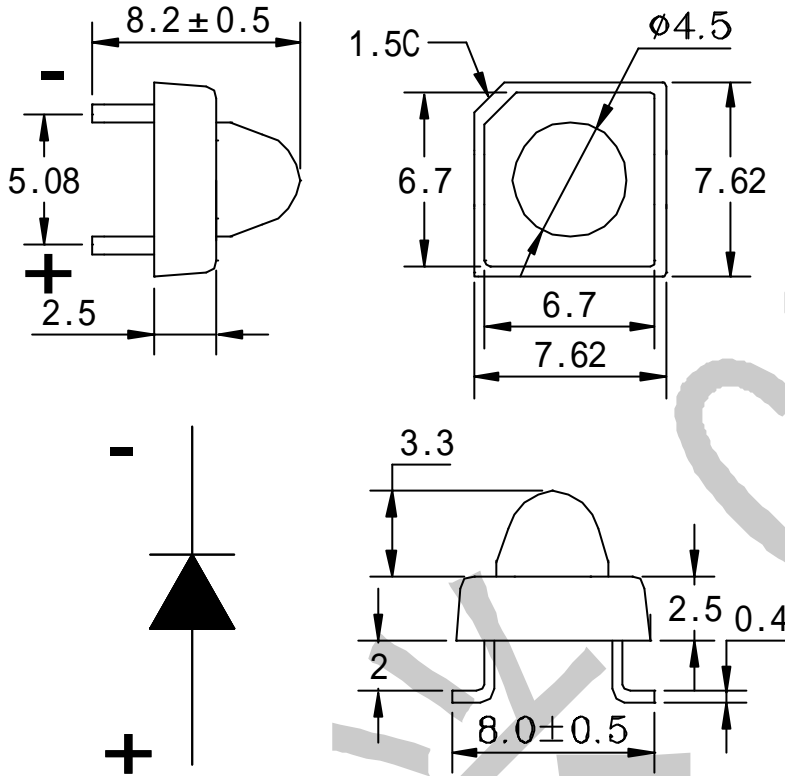
- ◆ High reliability
- ◆ 5.08mm Lead spacing
- ◆ Pb Free
- ◆ High emission power, far from the launch distance, clear image
- ◆ Peak wavelength: $\lambda=850\text{nm}$
- ◆ The batch consistency, 0.1V file voltage, 5nm wavelength grade
- ◆ The long service life, low driving voltage
- ◆ This product itself will remain within RoHS compliant version.

Applications

- ◆ Applicable to security surveillance camera
- ◆ Free air transmission system
- ◆ Infrared remote control units with high power requirement
- ◆ Smoke detector
- ◆ Infrared applied system
- ◆ That is suitable for various sizes of touch screen



Package Dimension



- Notes :
- 1、 All dimensions are in millimeters.
 - 2、 Tolerance is $\pm 0.25\text{mm}$ unless otherwise noted.

Device Selection Guide

Chip Materials	Lens Color
GaAlAs	Water clear

Absolute Maximum Ratings at Ta=25



深圳成光兴光电技术股份有限公司

SHENZHEN CGX OPTOELECTRONIC TECHNOLOGY, INC.

CGX-1194GIRPC0/D16

Parameter	Symbol	MAX	Unit
Power Dissipation at(or below) 25 free air temperature	P_d	150	mW
Peak Forward Current (1/10 Duty Cycle,0.1ms Pulse Width)	I_{FP}	400	mA
Continuous Forward Current	I_F	100	mA
Reverse Voltage	V_R	5	V
Operating Temperature Range	T_{opr}	-40 to +85	
Storage Temperature Range	T_{stg}	-40 to +100	
Lead Soldering Temperature	T_{sol}	200 for 5 seconds	

Electrical Optical Characteristics at $T_a=25$

Parameter	Symbol	Min	Typ	Max	Uni	Test Condition
Radiant Intensity	I_e	40.0	6.0	-----	Mw/sr	$I_F=20mA$
Viewing Angle	$2_{1/2}$	----	30	-----	Deg	
Peak Emission Wavelength	λ_p	830	845	855	nm	$I_F=100mA$
Spectral Line Half-Width		----	40	----	nm	$I_F=100mA$
Forward Voltage	V_F	1.40	1.55	1.65	V	$I_F=100mA$
Reverse Current	I_R	----	----	10	μA	$V_R=5V$

Typical Electro-Optical Characteristics Curve

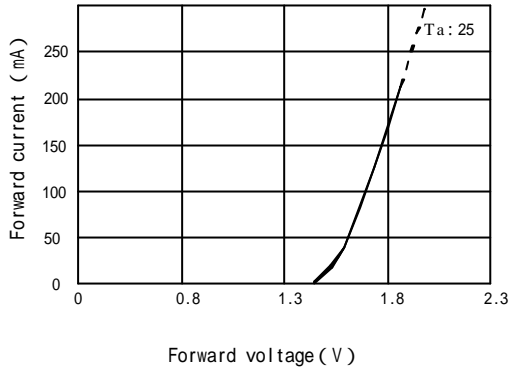


深圳成光兴光电技术股份有限公司

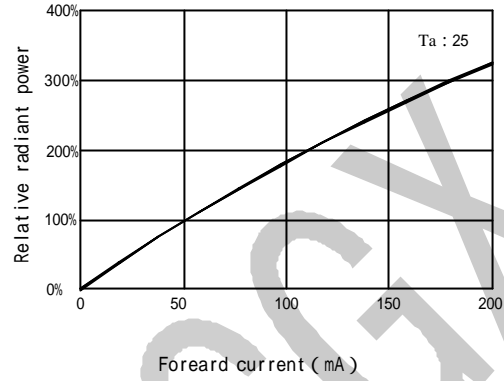
SHENZHEN CGX OPTOELECTRONIC TECHNOLOGY, INC.

CGX-1194GIRPC0/D16

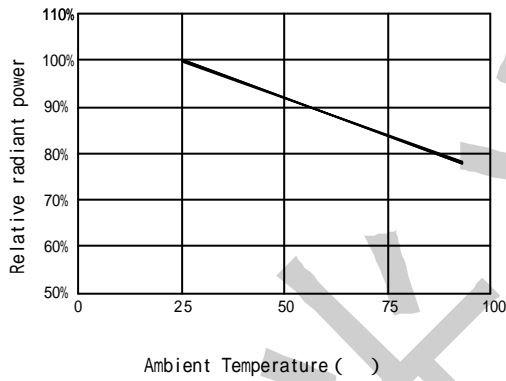
Forward current Vs.
Forward voltage



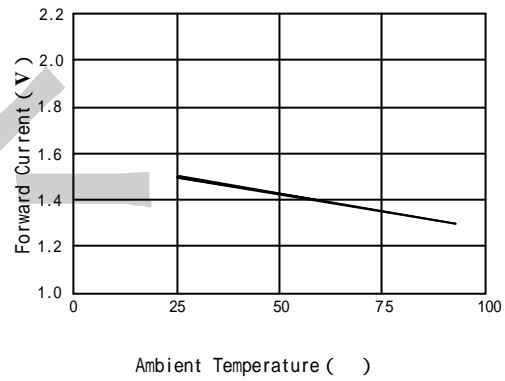
Relative Radiant power
vs. Forward Current



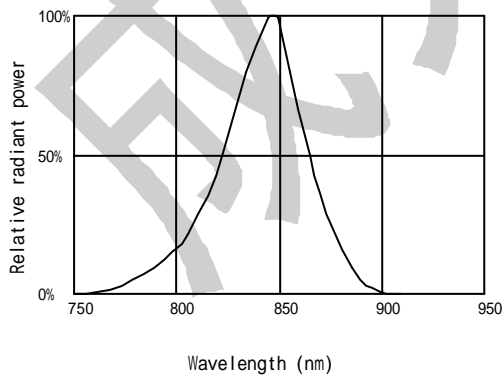
Relative Radiant power
vs. Ambient Temperature



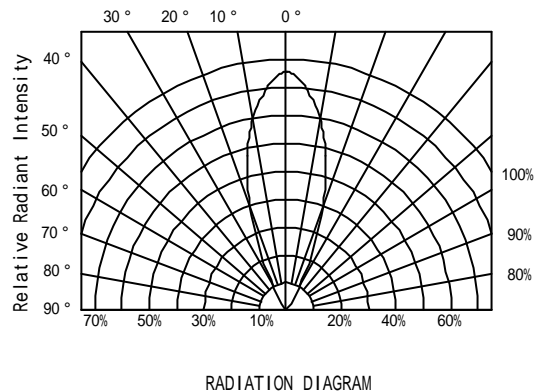
Forward Current vs.
Ambient Temperature



Spectral Distribution



Relative Radiant Intensity
vs. Angular Displacement



Reliability test items and test conditions

TEL : +86 (0) 755-6631006

FAX : +86 (0) 755-61899639

Page 40F5

Website: www.szcgx.com

E-mail: szcgx@szcgx.com



深圳成光兴光电技术股份有限公司

SHENZHEN CGX OPTOELECTRONIC TECHNOLOGY, INC.

CGX-1194GIRPC0/D16

The reliability of products shall be satisfied with items listed below.

Confidence level : 90%

LTPD (group of permitted defect rate): 10%

No.	Item	Test Conditions	Test Hours/ Cycles	Sample Sizes	Ac/Re	Reference Standard
1	REFLOW Soldering	Temp. : 200 ±5	5secs	22PCS	0/1	JEITA ED-4701 300 302
2	Temperature Cycle	H : +100 15min ~ 5 min L : -40 15min	100Cycles	22PCS	0/1	JEITA ED-4701 100 305
3	Thermal Shock	H : +100 5min ~ 10 sec L : -10 5min	100Cycles	22PCS	0/1	MIL-STD-202G
4	High Temperature Storage	Temp. : 100	1000Hrs	22PCS	0/1	JEITA ED-4701 200 201
5	Low Temperature Storage	Temp. : -40	1000Hrs	22PCS	0/1	JEITA ED-4701 200 202
6	DC Operating Life	IF = 100 mA	1000Hrs	22PCS	0/1	Tested with CGX standard
7	High Temperature/ High Humidity	85 /RH85%	1000Hrs	22PCS	0/1	JEITA ED-4701 100 103

Notes : Failure Judgement Criteria : IR U×2 Ie L×0.8 VF U×1.2

U : Upper Specification Limit L : Lower Specification Limit